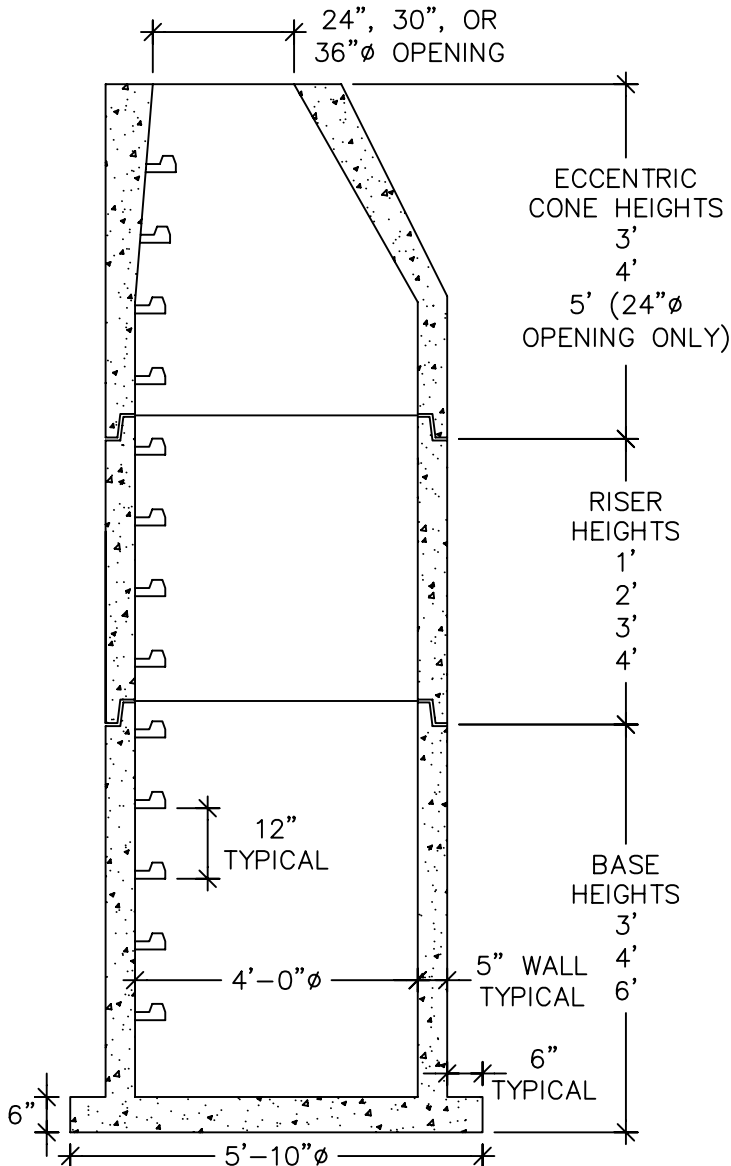
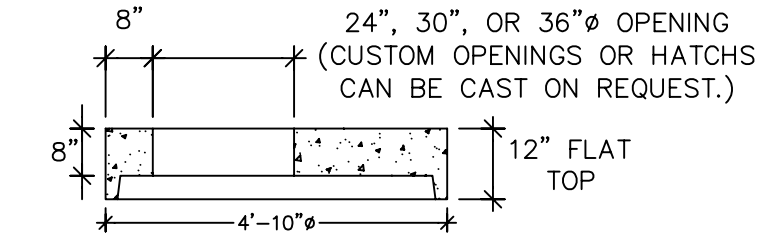


# 4' DIAMETER MANHOLE COMPONENTS

MANHOLE DESIGN SPECIFICATION  
CONFORMS TO LATEST:  
ASTM DESIGNATION C478

**NOTES:**

1. JOINT SEALANT IS BUTYL RUBBER MASTIC TYPE SEAL THAT CONFORMS TO LATEST AASHTO SPECIFICATION M-198. MEETS FEDERAL SPECIFICATION SS-S-0021(210-A).
2. REINFORCING STEEL WELDED WIRE FABRIC CONFORMS TO LATEST ASTM SPECIFICATION A185.
3. REINFORCING STEEL DEFORMED BARS CONFORM TO LATEST ASTM SPECIFICATION A615.
4. CONCRETE COMPRESSIVE STRENGTH- 4000 PSI AT 28 DAYS.
5. MANHOLE STEPS MEET LATEST OSHA REGULATION 29 CFR 1910.27, SECTION 16 OF ASTM SPECIFICATION C478 AND SECTION 10 OF ASTM SPECIFICATION C497.
6. WHEN SPECIFIED, MANHOLES ARE COATED WITH BAY OIL, "EBONY".
7. METHOD OF MANUFACTURE: WET CAST.
8. BASE SECTION IS MONOLITHIC.



**WEIGHT CHART**

PRODUCT	APPROX WEIGHT
3' BASE	4000 LBS.
4' BASE	4700 LBS.
6' BASE	6600 LBS.
1' RISER	900 LBS.
2' RISER	1700 LBS.
3' RISER	2600 LBS.
4' RISER	3400 LBS.
3' CONE W/ 24" OPENING	2500 LBS.
3' CONE W/ 30" OPENING	2600 LBS.
3' CONE W/ 36" OPENING	2750 LBS.
4' CONE W/ 24" OPENING	3200 LBS.
4' CONE W/ 36" OPENING	3600 LBS.
5' CONE W/ 24" OPENING	4200 LBS.
FLAT SLAB TOP W/ 24" OPENING	1650 LBS.
FLAT SLAB TOP W/ 30" OPENING	1500 LBS.
FLAT SLAB TOP W/ 36" OPENING	1250 LBS.



**UNITED CONCRETE PRODUCTS INC.**

173 CHURCH STREET  
YALESVILLE, CT 06492

TEL. 800 234-3119  
(203) 269-3119

FAX. (203) 265-4941