

10' DIAMETER MANHOLE COMPONENTS

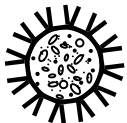
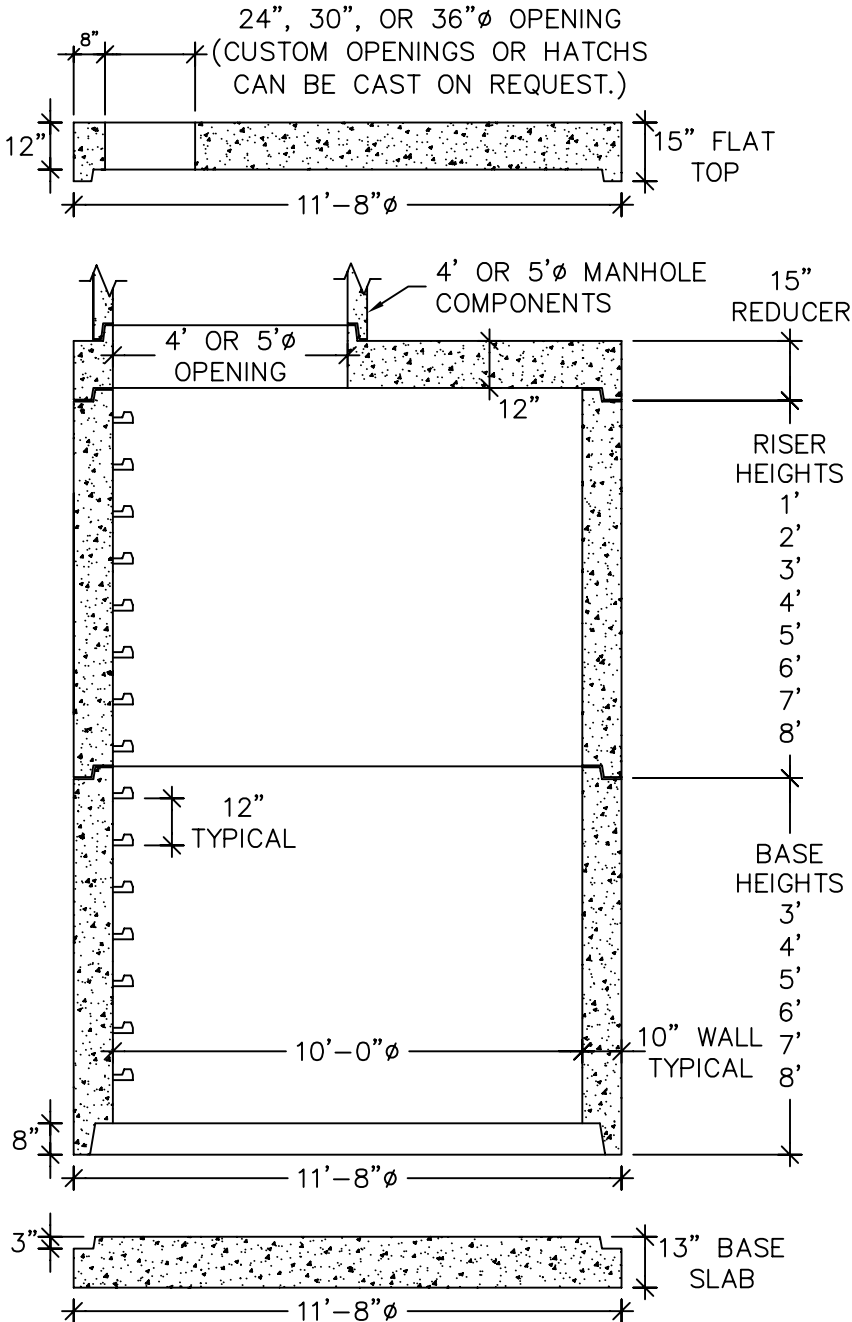
MANHOLE DESIGN SPECIFICATION
CONFORMS TO LATEST:
ASTM DESIGNATION C478

NOTES:

1. JOINT SEALANT IS BUTYL RUBBER MASTIC TYPE SEAL THAT CONFORMS TO LATEST AASHTO SPECIFICATION M-198. MEETS FEDERAL SPECIFICATION SS-S-0021(210-A).
2. REINFORCING STEEL WELDED WIRE FABRIC CONFORMS TO LATEST ASTM SPECIFICATION A185.
3. REINFORCING STEEL DEFORMED BARS CONFORM TO LATEST ASTM SPECIFICATION A615.
4. CONCRETE COMPRESSIVE STRENGTH- 4000 PSI AT 28 DAYS.
5. MANHOLE STEPS MEET LATEST OSHA REGULATION 29 CFR 1910.27, SECTION 16 OF ASTM SPECIFICATION C478 AND SECTION 10 OF ASTM SPECIFICATION C497.
6. WHEN SPECIFIED, MANHOLES ARE COATED WITH BAY OIL, "EBONY".
7. METHOD OF MANUFACTURE: WET CAST.

WEIGHT CHART

PRODUCT	APPROX WEIGHT
13" BASE SLAB	16200 LBS.
3' BASE	20600 LBS.
4' BASE	24800 LBS.
5' BASE	28900 LBS.
6' BASE	33000 LBS.
7' BASE	37300 LBS.
8' BASE	41400 LBS.
1' RISER	4200 LBS.
2' RISER	8400 LBS.
3' RISER	12500 LBS.
4' RISER	16700 LBS.
5' RISER	20900 LBS.
6' RISER	25000 LBS.
7' RISER	29200 LBS.
8' RISER	33400 LBS.
17" REDUCER, 8' TO 4' DIA	14300 LBS.
17" REDUCER, 8' TO 5' DIA	13400 LBS.
FLAT SLAB TOP W/ 24" OPENING	15500 LBS.
FLAT SLAB TOP W/ 30" OPENING	15200 LBS.
FLAT SLAB TOP W/ 36" OPENING	14900 LBS.



UNITED CONCRETE PRODUCTS INC.

173 CHURCH STREET
YALESVILLE, CT 06492

TEL. 800 234-3119
(203) 269-3119

FAX. (203) 265-4941