

PLAN - SLAB REINFORCING

NOTES:

CONCRETE COMPRESSIVE STRENGTH 5,000 psi @ 28 DAYS

REINFORCING STEEL SHALL COMPLY WITH ASTM A615 GRADE 60 OR ASTM A615 GRADE 40, PER REVISION AND PLACEMENT SHALL COMPLY WITH LATEST ACI STANDARDS.

LIFTING ASSEMBLY FOR HANDLING SHALL BE INSTALLED PER MANUFACTURER'S REQUIREMENTS.

APPROXIMATE SLAB WEIGHT: 41,000 LBS.

MIN. SOE BEARING CAP. = 3000 psi.

ORDER IN WHICH REBAR SHOULD BE PLACED

SLAB DETAILS

FOR

CONVAULT

12,000 GALLON TANK

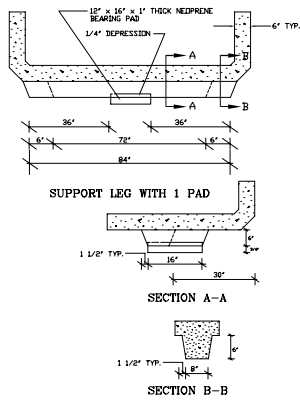
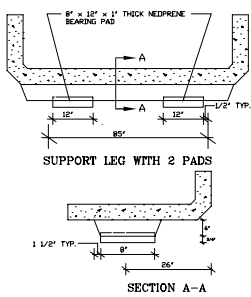
UNITED CONCRETE PRODUCTS, INC.

173 CHURCH STREET

YALESVILLE, CT

(203) 269-3119

(203) 265-4941 FAX



GENERAL NOTES:

STEEL TANK SHALL BE U.L.L. LISTED FOR ABOVE GROUND STORAGE OF FLAMMABLE LIQUIDS.

STEEL TANK SKIN SHALL BE 7 OR 10 GAUGE THICK A.S.T.M. A-36 STEEL PLATE.

STEEL TANK AND SECONDARY CONTAINMENT SHALL BE ENCASED IN 6" OF REINFORCED CONCRETE.

CONCRETE COMPRESSIVE STRENGTH = 5,000 psi @ 28 DAYS

THE VAULT SHALL BE OF A MONOLITHIC (SEAMLESS AND CONTINUOUS) CONCRETE POUR AND CONTAIN NO COIL JOINTS OR HEAT SINKS (HEAT TRANSFER POINTS) ON THE BOTTOM OR SIDES.

THE SECONDARY CONTAINMENT SHALL CONSIST OF A 30 ML HIGH-DENSITY CARBON LINED POLYETHYLENE GEO-MEMBRANE.