

TYPE II CATCH BASIN BASE SLAB AND SUMP

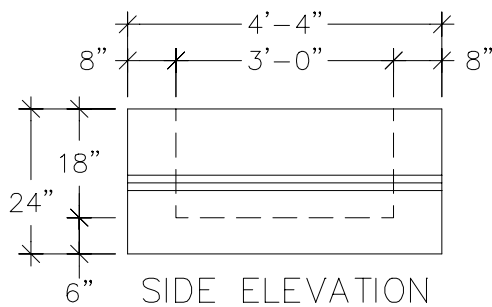
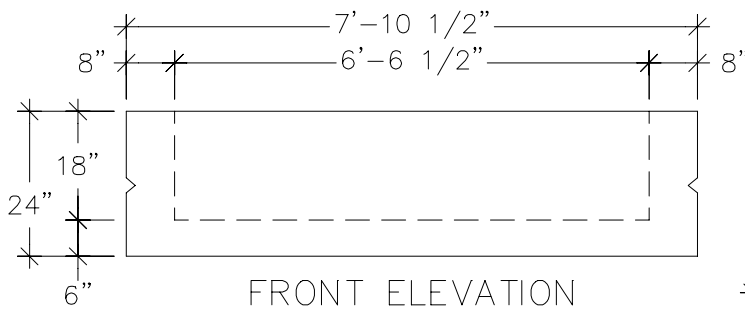
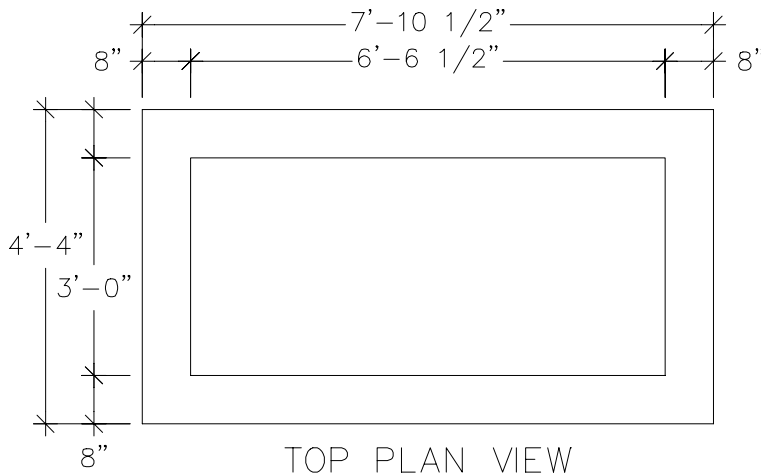
DESIGN COMFORMS TO CDOT
AND LOCAL SPECIFICATIONS.

NOTES:

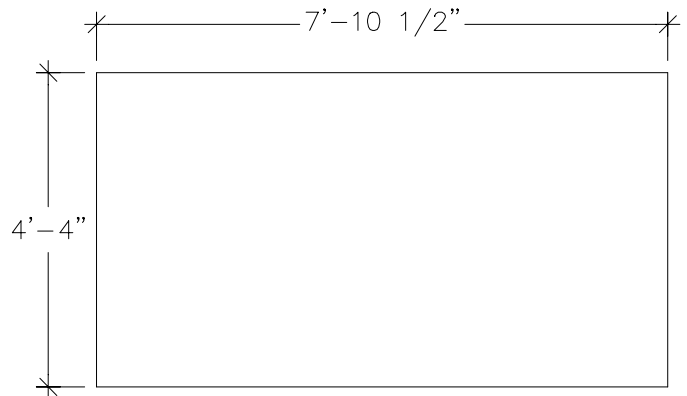
1. REINFORCING STEEL WELDED WIRE FABRIC CONFORMS TO LATEST ASTM SPECIFICATION A185.
2. REINFORCING STEEL DEFORMED BARS CONFORM TO LATEST ASTM SPECIFICATION A615.
3. CONCRETE COMPRESSIVE STRENGTH- 4000 PSI AT 28 DAYS.
4. METHOD OF MANUFACTURE: WET CAST.
5. SECTION IS MONOLITHIC.
6. DESIGN LOAD: AASHTO H-20

WEIGHT CHART

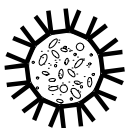
PRODUCT	APPROX WEIGHT
6" BASE SLAB	2600 LBS.
SUMP	5800 LBS.



SUMP



SLAB IS 6" THICK
BASE SLAB



UNITED CONCRETE PRODUCTS INC.

173 CHURCH STREET
YALESVILLE, CT 06492

TEL. 800 234-3119
(203) 269-3119

FAX. (203) 265-4941