

**PLAN - SLAB REINFORCING**

**NOTES:**

CONCRETE COMPRESSIVE STRENGTH: 5,000 psi @ 28 DAYS

REINFORCING STEEL SHALL COMPLY WITH ASTM A618 GRADE 40

IF ANY REINFORCING IS TO BE PLACED IN PRECAST, IT SHALL COMPLY WITH LATEST ACI STANDARDS

IF ANY REINFORCING FOR MANNWAY SHALL BE INSTALLED PER MANUFACTURER'S REQUIREMENTS

APPROXIMATE SLAB WEIGHT: 14,000 LBS.

MIN. CUR. BEARING CAP. = 3,000 PSI.

ORDER IN WHICH REBAR SHOULD BE PLACED

**SLAB DETAILS**

FOR

**CONVAULT**

**4,000 GALLON TANK**

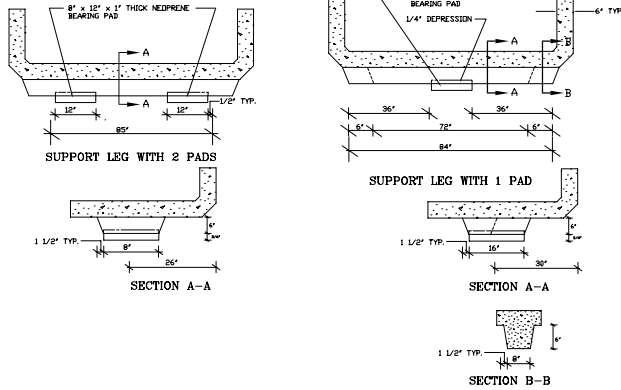
**UNITED CONCRETE PRODUCTS, INC.**

173 CHURCH STREET

YALESVILLE, CT

(203) 269-3119

(203) 265-4941 FAX



**GENERAL NOTES:**

STEEL TANK SHALL BE U.L.L. LISTED FOR ABOVE GROUND STORAGE OF FLAMMABLE LIQUIDS.

STEEL TANK SKIN SHALL BE 7 OR 10 GAUGE THICK A.S.T.M. A-36 STEEL PLATE.

STEEL TANK AND SECONDARY CONTAINMENT SHALL BE ENCASED IN 6" OF REINFORCED CONCRETE.

CONCRETE COMPRESSIVE STRENGTH = 5,000 psi @ 28 DAYS

THE VAULT SHALL BE OF A MONOLITHIC (SEAMLESS AND CONTINUOUS) CONCRETE POUR AND CONTAIN NO COLD JOINTS OR HEAT SINKS (HEAT TRANSFER POINTS) ON THE BOTTOM OR SIDES.

THE SECONDARY CONTAINMENT SHALL CONSIST OF A 30 MIL HIGH-DENSITY CARBON LINED POLYETHYLENE GEO-MEMBRANE.