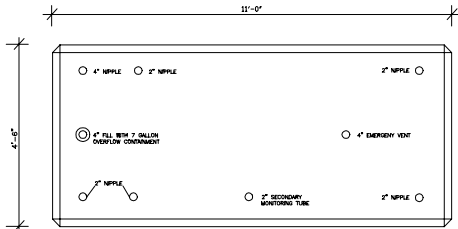


SECTION



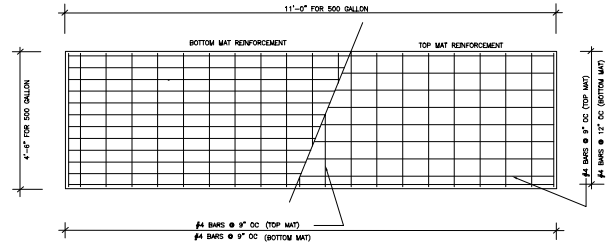
NOTE: RED CAP ALL FITTINGS

OUTLET PLAN



SECTION - SLAB REINFORCING

NOTE:
 8" SLAB IS REQUIRED WHEN POURED IN THE FIELD
 6" SLAB IS AVAILABLE WHEN ORDERED IN PRECAST FROM UNITED CONCRETE



PLAN - SLAB REINFORCING

NOTES:
 CONCRETE COMPRESSIVE STRENGTH 5,000 psi @ 28 DAYS
 REINFORCING STEEL SHALL COMPLY WITH ASTM A615 GRADE 60
 OR A715 AND SHALL BE PROPERLY BENT AND PLACED
 SHALL COMPLY WITH LATEST AC STANDARDS.
 LIFTING INSERTS FOR HANDLING SHALL BE INSTALLED
 FOR MANUFACTURER'S REQUIREMENTS.
 APPROXIMATE SLAB WEIGHT = 5,500 lbs.
 MAX LOAD ON SOL = 3000 psf.

GENERAL NOTES:

- STEEL TANK SHALL BE ULL LISTED FOR ABOVE GROUND STORAGE OF FLAMMABLE LIQUIDS.
- STEEL TANK SKIN SHALL BE 10 GAUGE OR 7 GAUGE THICK A.S.T.M. A-36 STEEL PLATE.
- STEEL TANK AND SECONDARY CONTAINMENT SHALL BE ENCASED IN 6" OF REINFORCED CONCRETE.
- CONCRETE COMPRESSIVE STRENGTH = 5,000 psi @ 28 DAYS
- THE VAULT SHALL BE OF A MONOLITHIC (SEAMLESS AND CONTINUOUS) CONCRETE POUR AND CONTAIN NO COLD JOINTS OR HEAT SINKS (HEAT TRANSFER POINTS) ON THE BOTTOM OR SIDES.
- THE SECONDARY CONTAINMENT SHALL CONSIST OF A 30 MIL HIGH-DENSITY CARBON LINED POLYETHYLENE GEO-MEMBRANE
- * DESIGNED FOR SNOW LL = 80 psf

ORIG. DATE = 5/31/95

TANK AND SLAB DETAILS
 FOR
 CONVAULT
 500 GALLON TANK
 UNITED CONCRETE PRODUCTS, INC.
 173 CHURCH STREET
 YALESVILLE, CT
 (203) 269-3119
 (203) 265-4941 FAX