

TANK SIZE	WEIGHT	A	B	C	D
250 GAL.	8000 LBS.	7'-8"	3'-3"	3'-9"	2'-8"
500 GAL.	12000 LBS.	11'-0"	3'-4"	4'-6"	6'-0"
1000 GAL.	18000 LBS.	11'-0"	4'-4"	5'-8"	6'-0"
2000 GAL.	28000 LBS.	11'-3"	5'-6"	8'-0"	6'-3"
4000 GAL.	45000 LBS.	17'-7"	6'-5 3/4"	8'-0"	12'-7"
6000 GAL.	60000 LBS.	17'-7"	8'-9 3/4"	8'-0"	12'-7"
8000 GAL.	75000 LBS.	23'-1"	8'-9 3/4"	8'-0"	18'-1"
10,000 GAL.	91000 LBS.	28'-7"	8'-9 3/4"	8'-0"	23'-7"
12,000 GAL.	101000 LBS.	34'-1"	8'-9 3/4"	8'-0"	29'-1"

GENERAL NOTES:

STEEL TANK SHALL BE U.L. LISTED FOR ABOVE GROUND STORAGE OF FLAMMABLE LIQUIDS.

STEEL TANK SKIN SHALL BE 7 OR 10 GAUGE THICK A.S.T.M. A-36 STEEL PLATE.

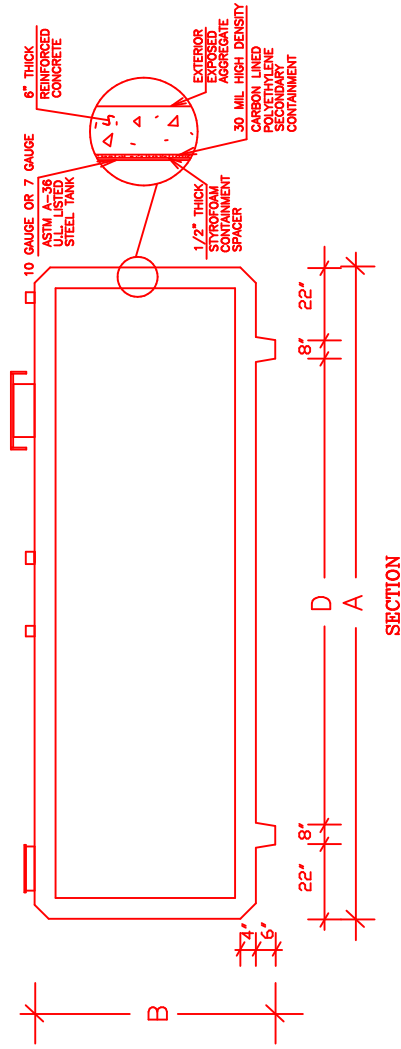
STEEL TANK AND SECONDARY CONTAINMENT SHALL BE ENCASED IN 6" OF REINFORCED CONCRETE.

CONCRETE COMPRESSIVE STRENGTH = 5,000 psi @ 28 DAYS

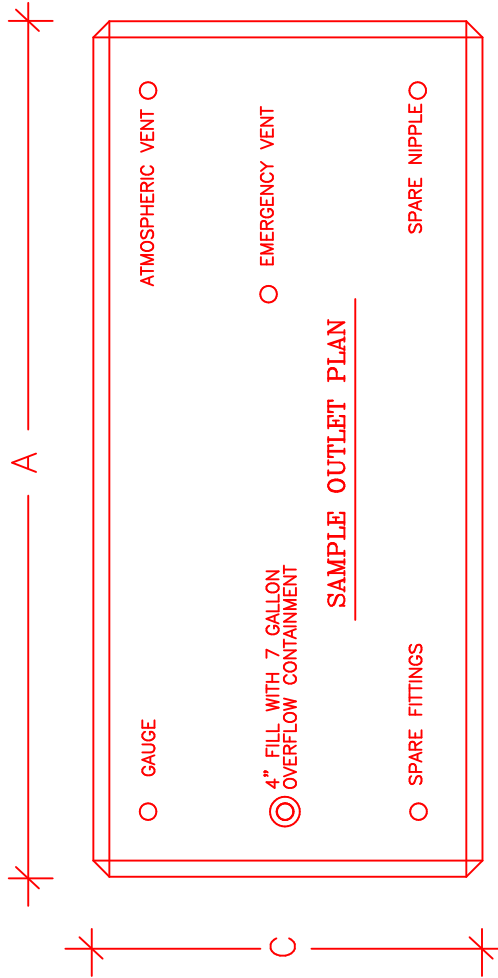
THE VAULT SHALL BE OF A MONOLITHIC (SEAMLESS AND CONTINUOUS) CONCRETE POUR AND CONTAIN NO COLD JOINTS OR HEAT SINKS (HEAT TRANSFER POINTS) ON THE BOTTOM OR SIDES.

THE SECONDARY CONTAINMENT SHALL CONSIST OF A 30 MIL HIGH-DENSITY CARBON LINED POLYETHYLENE GEO-MEMBRANE

DESIGNED FOR SNOW LL = 80 psf



SECTION



SAMPLE OUTLET PLAN

DETAILS FOR CONVAULT TANK

UNITED CONCRETE PRODUCTS, INC.
 173 CHURCH STREET
 YALESVILLE, CT
 (203) 269-3119
 (203) 265-4941 FAX