

Kor-N-Seal® II

206 Series Pipe-to-Manhole Connector

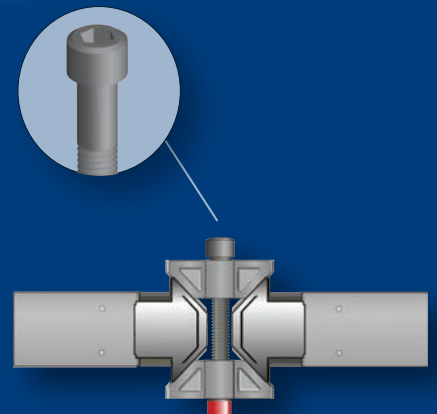


NEW CORRUGATED RUBBER DESIGN

- *Corrugated profile for easier installation and positioning of the pipe in trench*
- *Designed for larger pipe sizes 18" - 51"*
- *Meets the specifications of ASTM C923*

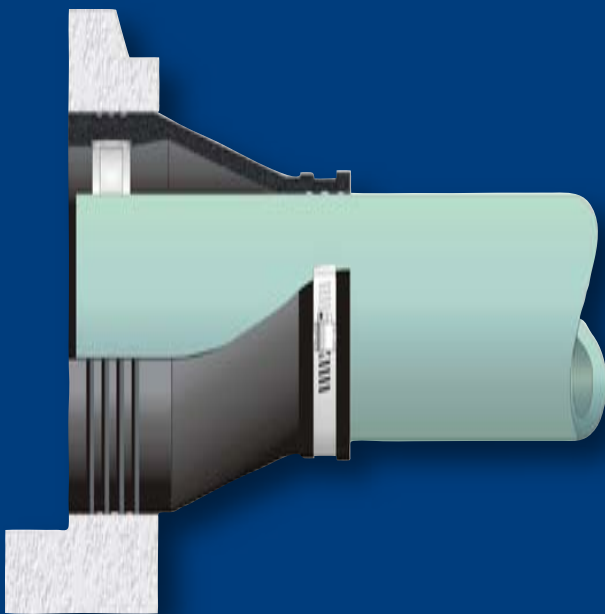


The new 206 Series Connector is designed with an Allen Head Wedge Bolt for easier installation of the connector into the manhole.



Kor-N-Seal® I

106/406 Series Pipe-to-Manhole Connector



- *Most widely used flexible connector in sanitary sewer applications throughout the world*
- *Easy-to-Install*
- *Meets the specifications of ASTM C923*



Patented Waveband technology creates a more effective seal by concentrating the compressive force of the expansion band. The rubber is “captured” between the band and the concrete.

Kor-N-Seal® Product Line

Technical Specifications

PERFORMANCE

Performed on all standard sizes of Kor-N-Seal Connectors.

Test	ASTM Method	Test Requirements	Kor-N-Seal Products
Head Pressure	C923 - 7.1	0° - 13 psi (30 ft) for 10 min.	+13 psi for 10 min.
		7° - 10 psi (23 ft) for 10 min.	+10 psi for 10 min.
Deflection Test	C923 - 7.2.2	7° in any direction	Over 7° in any direction
Load Test	C923 - 7.2.3	150 lbs/in. pipe dia.	Over 150 lbs/in. pipe dia.

RESILIENT RUBBER MATERIAL

Conforms to ASTM C923

Test	ASTM Method	Test Requirements	Kor-N-Seal Products
Chemical Resistance	D543, at 22°C for 48 h		
1 N Sulfuric Acid		No weight loss	No weight loss
1 N Hydrochloric Acid		No weight loss	No weight loss
Tensile Strength	D412	1200 psi	1580 psi
Elongation at Break		350% min.	500%
Hardness	D2240 (shore A durometer)	± 5 from the manufacturer's specified hardness	48 ± 5
Accelerated Oven-Aging	D573 70 ± 1°C for 7 days	Decrease of 15%, max. of original tensile strength, decrease of 20% max. of elongation	10.1% tensile decrease 14% elongation decrease
Compression Set	D395, method B, at 70°C for 22h	Decrease of 25%, max. of original deflection	13% decrease
Water Absorption	D471, immerse 0.75 by 2-in. specimen in distilled water at 70°C for 48 h	Increase of 10%, max. of original by weight	.8% increase
Ozone Resistance	D1171	Rating 0	Rating 0
Low-temperature Brittle Point	D746	No fracture at -40°C	No fracture at -40°C
Tear Resistance	D624, method B	200 lbf/in.	No tear at 210 lbf/in.

300 SERIES STAINLESS STEEL

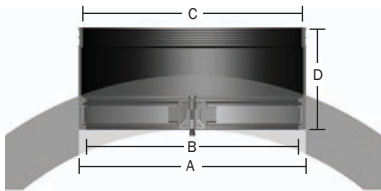
Conforms to ASTM C923, ASTM A666, and A240

Test	Kor-N-Seal Products
Tensile Strength	75,000 psi
Yield Strength (min.)	30,000 psi
Elongation in 2" (min. %)	40%
Hardness Rockwell "B"	95



Kor-N-Seal II

206 Series Pipe-to-Manhole Connector



- To fit larger sized pipe into smaller diameter manholes, please refer to our Kor-N-Seal II 306 Series Connectors.

- Using Corrugated Pipe: Adapters are required when using Corrugated Pipe. Refer to the Corrugated Pipe Adapter Data Sheet for details.

P/N	Suggested Pipe O.D. Range	Hole Size Range				Connector Dimension				Pipe Clamps		Minimum Manhole Size Required
		A	B	C	D	Qty	P/N					
S206-18L	15.000 — 15.625	17.98	—	18.13	15.875	16	10.50	2	I-282	48/4		
S206-20 S206-20L	15.625 — 17.000 17.000 — 17.625	19.98	—	20.13	17.875	17 18	10.50	2 2	I-282 I-306	48/4		
S206-22 S206-22L	17.625 — 19.000 19.000 — 19.625	21.98	—	22.13	19.875	19 20	10.50	2 2	I-318 I-348	48/4		
* S206-24A	18.000 — 19.500	23.98	—	24.13	21.875	18.75	10.00	4	I-180	48/5		
S206-24 S206-24L	19.625 — 21.000 21.000 — 21.625	23.98	—	24.13	21.875	21 22	10.50	4 4	I-180	48/5		
S206-26 S206-26L	21.625 — 23.000 23.000 — 23.625	26.00	—	26.20	23.875	23 24	10.50	4 4	I-190 I-218	48/5		
S206-28 S206-28L	23.625 — 25.000 25.000 — 25.625	28.00	—	28.20	25.875	25 26	10.50	4 4	I-218	48/5		
S206-30 S206-30L	25.625 — 27.000 27.000 — 27.625	30.00	—	30.20	27.875	27 28	10.50	4 4	I-218 I-242	48/6		
S206-32 S206-32L	27.625 — 29.000 29.000 — 29.625	32.00	—	32.20	29.875	29 30	10.50	4 4	I-242	60/6		
S206-34 S206-34L	29.625 — 31.000 31.000 — 31.625	34.00	—	34.20	31.875	31 32	10.50	4 4	I-258	60/6		
S206-36 S206-36L	31.625 — 33.000 33.000 — 33.625	36.00	—	36.20	33.875	33 34	10.50	4 4	I-282	60/7		
S206-38 S206-38L	33.625 — 35.000 35.000 — 35.625	38.00	—	38.20	35.875	35 36	10.50	4 4	I-282 I-306	60/7		
S206-40 S206-40L	35.625 — 37.000 37.000 — 37.625	40.00	—	40.20	37.875	37 38	10.50	4 4	I-306	60/8		
S206-42 S206-42L	37.625 — 39.000 39.000 — 39.625	42.00	—	42.20	39.875	39 40	10.50	4 4	I-318 I-348	60/8		
S206-44 S206-44L	39.625 — 41.000 41.000 — 41.625	44.00	—	44.20	41.875	41 42	10.50	4 4	I-348	72/8		
S206-46 S206-46L	41.625 — 43.000 43.000 — 43.625	46.00	—	46.20	43.875	43 44	10.50	4 4	I-348 I-242	84/8		
S206-48 S206-48L	43.625 — 45.000 45.000 — 45.625	48.00	—	48.20	45.875	45 46	10.50	6 6	I-242 I-258	84/8		
S206-50 S206-50L	45.000 — 45.625 45.625 — 47.000	50.00	—	50.25	47.250	46 47	10.50	6 6	I-258	84/9		
S206-52 S206-52L	47.000 — 47.625 47.625 — 49.000	52.00	—	52.25	49.250	48 49	10.50	6 6	I-282	84/9		
S206-54 S206-54L	49.000 — 49.625 49.625 — 51.000	54.00	—	54.25	51.250	50 51	10.50	6 6	I-282	96/8.5		

Larger sizes quoted upon request.



Trelleborg Pipe Seals Milford, Inc.
P.O. Box 301, 250 Elm Street, Milford, New Hampshire 03055 U.S.A.
Tel: 800-626-2180 603-673-8680 Fax: 603-673-7271 www.trelleborg.com/npc